



ISMS SOLUTION PRODUCT CATALOGUE

PT BATUKARANG KENAN ABADI

Office : Jalan Lintas Timur Km.40, Kab. Siak, Pekanbaru

Website : www.bkka.co.id

Email : batukarangkenanabadi@bkka.co.id

Contact person:

+62 811 1798 995 (Grace)

+62 811 1546 034 (Hansel)

INTELLIGENT SECURITY MANAGEMENT SYSTEM

AI-powered technology • Scalability • User-friendly Interface

ABOUT US

PT Batukarang Kenan Abadi adalah perusahaan teknologi inovatif yang hadir untuk memberikan solusi berbasis Internet of Things (IoT) dalam mendukung pengelolaan infrastruktur modern. Berdiri sejak Maret 2024, kami berdedikasi untuk menghadirkan layanan unggulan yang mengintegrasikan teknologi terkini, keandalan, dan efisiensi.

Kami menawarkan berbagai solusi canggih yang dirancang untuk memenuhi kebutuhan spesifik pelanggan seperti Integrated Security Management System (ISMS) yaitu sistem keamanan terintegrasi yang memastikan perlindungan optimal untuk aset Anda.

**Where Professionalism Meets Personalization,
Perfecting Every Detail.**



CLEMENT HANSEL
Chief Executive Officer

Melalui komitmen kami pada kualitas, inovasi, dan layanan menyeluruh, PT Batukarang Kenan Abadi siap menjadi mitra terpercaya Anda dalam menciptakan infrastruktur yang lebih aman, efisien, dan berkelanjutan.

"Empowering the Future with Intelligent IoT Solutions."



TABLE OF CONTENT

Integrated Security Management System (ISMS)

Perimeter Protection	3
Personnel Entrance and Exit Management	5
Fire Prevention	9
Control Center	11
Integrated Solar-powered Security	15
Loss Prevention	19
Market Application	22



Perimeter Protection

CHALLENGE

Keamanan perimeter pada beberapa area penting seperti fasilitas pemerintahan, industri, telekomunikasi, residensial/perumahan, gedung komersial, data center, dan lainnya perlu ditingkatkan. Pengamanan standar sering kali tidak cukup untuk mendeteksi atau menanggulangi pelanggaran akses yang canggih.

1. Kurangnya pengawasan 24/7 menyebabkan pencurian, kerusakan properti, dan pelanggaran yang mengakibatkan kerugian
2. Petugas keamanan yang berada jauh atau terbatas secara fisik memungkinkan ancaman meningkat sehingga menghambat penanganan situasi secara cepat
3. Tidak adanya bukti tercatat mengenai penyusupan menyebabkan kendala untuk mengajukan klaim asuransi, karena tidak ada catatan yang mendukungnya

VALUE

Perimeter Solution hadir sebagai solusi komprehensif dengan teknologi canggih untuk keamanan perimeter. Dengan sistem sensor gerak, kamera pengawas pintar, dan sistem deteksi dini otomatis, perimeter Anda terjaga secara real-time, memberikan perlindungan maksimal dari setiap potensi ancaman.



Cakupan Keamanan 24/7

Perekaman video 24/7 yang berkelanjutan memberikan cakupan yang terperinci dan menyeluruh. Sistem ini juga memiliki akurasi 99% dalam mendeteksi penyusup, sehingga meminimalkan alarm palsu.



Respon Tanggap terhadap Penyusupan

Saat kamera AI mendeteksi adanya penyusupan, ia memicu tindakan pencegahan aktif lokal secara real-time dan memberi tahu petugas keamanan untuk mengambil tindakan yang tepat.



Bukti yang Cukup untuk Investigasi

Rekaman video HD dari penyusupan yang terdeteksi sangat penting untuk investigasi lebih lanjut dan klaim asuransi

TPC-BF1241-S8

Thermal Network Mini Hybrid Bullet Camera

- > Vanadium oxide uncooled focal plane detector.
- > 4Megapixel progressive scan CMOS.
- > AI functions: heat detection, tripwire, human/vehicle classification, smoking detection, and call detection.
- > Built-in white light and audio alarm.
- > Remote auxiliary management.
- > Dual image fusion (visible and thermal channels).
- > Wide input voltage 12 VDC \pm 20%, and PoE.
- > IP67 rated



IPC-HFW3449T1-AS-PV

4MP Smart Dual Light Active Deterrence Fixed-focal Bullet WizSense Network Camera

* The parameters and datasheets below can only be applied to 3449-PV-S5 series.

- > 4-MP 1/2.7" CMOS image sensor, low luminance, and high definition image.
- > Outputs max. 4 MP (2688 \times 1520)@25/30 fps.
- > H.265 codec, high compression rate, ultra-low bit rate.
- > Built-in warm light and IR LED; the max. IR illumination distance is 30 m and warm light distance is 30 m.

IS4210-8GT-120

10-Port Managed Industrial Gigabit Switch with 8-Port PoE (Managed)

- > All-gigabit port design.
- > Supports IEEE802.3af, IEEE802.3at, Hi-PoE and IEEE802.3bt (red port) standards.
- > 250 m long-distance PoE transmission (10 Mbps).
- > PoE Watchdog.
- > Supports STP, RSTP, and ERPS.
- > IEEE802.1Q-based VLAN configuration.
- > Manual link aggregation and static LACP.
- > Desktop mount and DIN-rail mount.



NVR4216-EI



16CH 1U 2HDDs WizSense Network Video Recorder

- > Smart H.265+/H.265/Smart H.264+/H.264/MJPEG decoding format
- > Access, storage or forwarding at 256 Mbps (180 Mbps when AI function enabled)
- > Max. decoding capability: 16 \times 1080p@30 fps. Supports adaptive decoding
- > AI by NVR: 1-channel face detection and recognition; 2-channel perimeter protection; up to 10 face databases and 20,000 face images; 4-channel SMD Plus
- > AI by Camera: Face detection and recognition
- > Connected to the third-party network cameras

LM32-F200

32" FHD Monitor

- > Light and cost-effective plastic housing
- > Suitable for continuous 24/7 operation
- > 178°H/178°V extra-wide viewing angle for overall viewing performance
- > High fidelity digital processing for a brilliant and vivid video
- > 8ms fast response time with no image blurring or ghosting
- > Support multiple signal inputs such as HDMI, VGA and USB
- > Built-in speakers
- > Physical button and infrared remote dual control mode
- > Low energy consumption, long service life





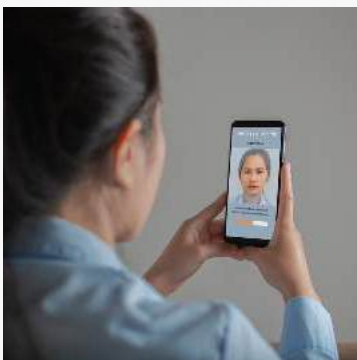
Personnel Entrance and Exit Management

CHALLENGE

Pendaftaran entri personel secara manual di kawasan industri dan gedung tidak efektif dalam proses verifikasi sehingga meningkatkan risiko pencurian, kehilangan properti, dan insiden keamanan. Personel yang terdaftar menghadapi antrian panjang, sehingga menciptakan pengalaman yang buruk, sementara pencatatan manual di atas kertas menyulitkan pelacakan karena sangat bergantung pada penilaian manusia, yang tidak efektif maupun akurat.

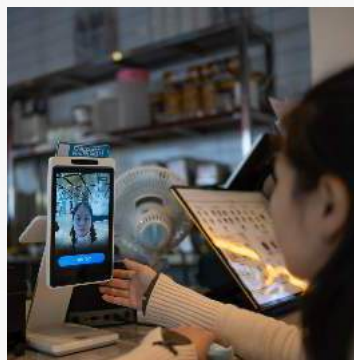
VALUE

AI Smart Entrance Control Solution kami menggunakan autentikasi wajah untuk mencegah masuknya orang yang tidak berwenang sehingga mengurangi risiko pencurian, kehilangan, dan insiden keamanan. Teknologi dengan akses hands-free akan meningkatkan kecepatan dalam memberikan akses bagi personel yang terdaftar, sementara rekaman masuk dan keluar visual akan memudahkan pencarian catatan.



Efficient Verification

Autentikasi mencegah personel tak berwenang memasuki lokasi.



Hands-free Entry Experience

Penghalang yang dikontrol oleh teknologi verifikasi biometrik memastikan akses yang akurat dan efisien, meningkatkan pengalaman masuk.



Visual Record and Search

Verifikasi visual atas peristiwa alarm dan pemantauan akses orang secara efisien memastikan entri yang aman dan menyederhanakan pencarian rekaman.

ASGB6XXX-X

Swing Turnstile

- > Barriers will be closed automatically if no one entered the turnstile after the identity is verified.
- > Parameters can be restored to default settings.
- > The lock and unlock of barriers can be controlled by remote controller (optional).
- > Support second unlocks and memory mode.
- > 4 types of security settings.
- > When receiving fire alarm signals, the turnstile will be normally open.
- > Support mechanical anti-pinch and IR anti-pinch, anti-collision.



ASI7213S-W

Dahua Face Recognition, Card Swiping, Password Face Recognition Access Controller



- > 7" LCD with a resolution of 1024 × 600.
- > The 2-MP dual-lens CMOS camera and high-performance image sensor ensure accurate recognition even in poor lighting and dark locations that lack illumination.
- > Features auto illumination to effectively reduce light pollution.
- > Supports 50,000 users (up to 50 administrators), 50,000 faces, 50,000 passwords, 100,000 cards, and 300,000 records.
- > Multiple unlock methods including face, IC card, password and QR code. You can also combine them to create your own personal unlock methods.
- > Displays the face bounding box and detects the face that occupies the most pixels in real time. You can also set target face filtering by configuring the face pixel threshold.
- > Recognizes faces 0.3 m to 2.0 m away (0.98 ft–6.56 ft), and detects persons between the height of 0.9 m and 2.4 m (2.95 ft–7.87 ft) when the camera is installed 1.4 m above the ground.

CS4010-8ET-110

10-Port Cloud Managed Desktop Switch with 8-Port PoE

- > Meets the requirements of IEEE802.3, IEEE802.3u, IEEE802.3x, IEEE802.3ab standards
- > Meets the requirements of IEEE802.3af, IEEE802.3at, Hi-PoE, and IEEE802.3bt power supply standards.
- > Manages PoE power consumption and PoE power on/off. Supports Intelligent PoE.
- > A wide operating temperature range and a full metal casing that is fully-enclosed and dust-proof.



SLM22-B200S



21.45" FHD Monitor

- > Light and cost-effective plastic housing;
- > Ultra-narrow bezel, elegant appearance, metal base;
- > 178°H/178°V extra-wide viewing angle for overall viewing performance;
- > High fidelity digital processing for a brilliant and vivid video;
- > Support multiple signal inputs such as HDMI, VGA;
- > Physical button control mode;
- > Low energy consumption, long service life;
- > Anti-blue light design, eye-protective.

ASM100 ASM100-D

Card Enrollment Reader

- > Default IC (Mifare) card (“-D” means ID EM card)
- > No driver installation, plug and play
- > USB power supply and communication
- > Beep and indicator



HAC-UZ3



2MP USB Camera

- > High-definition image sensor
- > USB connection & easy operation
- > UVC protocol & high compatibility
- > Far-field pickup, beamforming, noise reduction

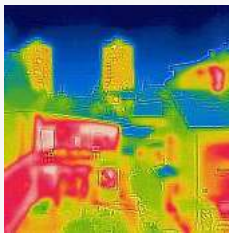
Fire Prevention

CHALLENGE

Kebakaran merupakan salah satu risiko paling serius yang dapat mengancam berbagai jenis bangunan dan fasilitas. Mencegah kebakaran bukanlah tugas yang mudah, karena membutuhkan deteksi dini, pemberian peringatan secara real-time, dan penanganan risiko yang tepat. Sayangnya, banyak tempat seringkali kekurangan sistem yang mampu mendeteksi potensi kebakaran. Kurangnya tindakan pencegahan yang memadai meningkatkan risiko kerusakan properti, hilangnya aset, hingga membahayakan keselamatan orang di sekitar.

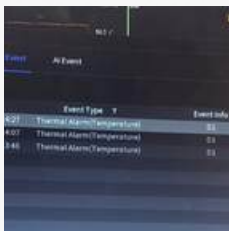
VALUE

Solusi pencegahan kebakaran berbasis AI kami menawarkan deteksi suhu yang abnormal dan potensi bahaya kebakaran selama 24/7. Sistem secara cepat memberikan peringatan kepada pihak keamanan terkait risiko kebakaran, sehingga meminimalisir potensi kerugian dan memastikan bukti-bukti terkumpul untuk menentukan penyebab kebakaran.



AI Detection of Temperature Abnormalities

Sistem canggih bertenaga AI terus memantau fluktuasi dan kelainan suhu secara real-time.



Immediate Fire Alerts

Peringatan kebakaran secara dini memungkinkan respons cepat, meningkatkan keselamatan, melindungi properti, mengurangi kerugian finansial, dan memperbaiki koordinasi saat keadaan darurat.



Clear Video Recordings

Rekaman video berkualitas tinggi membantu penyelidikan menyeluruh terkait penyebab kebakaran.

TPC-BF1241-S8

Thermal Network Mini Hybrid Bullet Camera

- > Vanadium oxide uncooled focal plane detector.
- > 4Megapixel progressive scan CMOS.
- > AI functions: heat detection, tripwire, human/vehicle classification, smoking detection, and call detection.
- > Temperature measurement range of -20 °C to +550 °C.

TPC-BF1241-T-S8

Thermal Network Mini Hybrid Bullet Camera

- > Vanadium oxide uncooled focal plane detector.



HY-C151

Conventional Sounder Strobe

- > Meets all requirements of latest EN54
- > Two-wire, polarity-free realizes convenient wiring
- > Completes EMC test, it has strong anti-electromagnetic interference ability, high stability and reliability
- > Ultra-low consumption and strong loading capacity
- > Loud sound output over 75 dB(A) at 3 meters, accompanied with bright alarm signal
- > Non-loosening screws on base terminal for easy installation
- > Contacts material is highly acid-resistant and rust-resistant.



IS4210-8GT-120

10-Port Managed Industrial Gigabit Switch with 8-Port PoE (Managed)

- > All-gigabit port design.
- > Supports IEEE802.3af, IEEE802.3at, Hi-PoE and IEEE802.3bt (red port) standards.
- > 250 m long-distance PoE transmission (10 Mbps).
- > PoE Watchdog.
- > Supports STP, RSTP, and ERPS.
- > IEEE802.1Q-based VLAN configuration.
- > Manual link aggregation and static LACP.
- > Desktop mount and DIN-rail mount.



NVR4216-EI



Dahua 8CH 2HDD 1U NETWORK VIDEO RECORDER

- > Supports Smart H.265+, H.265, Smart H.264+, H.264 and MJPEG decoding formats.
- > Max. decoding capability: 32 × 1080p@30 fps or 8 × 8MP@30 fps.
- > Max. 384/384/384 Mbps incoming/recording/outgoing bandwidth.
- > Supports IP cameras with a resolution up to 32 MP.
- > Supports AcuPick with up to 8 channels.
- > Supports N+M cluster, iSCSI.

Dahua 8CH 2HDD 1U NETWORK VIDEO RECORDER

LM22-B200S

21.45" FHD Monitor

- > Light and cost-effective plastic housing;
- > Ultra-narrow bezel, elegant appearance, metal base;
- > 178°H/178°V extra-wide viewing angle for overall viewing performance;
- > High fidelity digital processing for a brilliant and vivid video;
- > Support multiple signal inputs such as HDMI, VGA;
- > Physical button control mode;
- > Low energy consumption, long service life;
- > Anti-blue light design, eye-protective.



Control Center

CHALLENGE

Sistem Control Center saat ini masih menghadapi beberapa tantangan. Kurangnya integrasi antar aplikasi keamanan seperti CCTV, Access Control, dan sistem alarm, membuat petugas keamanan harus berpindah-pindah antar aplikasi. Hal ini tidak hanya memakan waktu, tetapi juga meningkatkan risiko human error.

Selain itu, penggunaan monitor terpisah untuk setiap aplikasi menciptakan tampilan yang terfragmentasi dan kurang efisien. Petugas keamanan harus terus-menerus beralih antara monitor untuk memantau situasi secara keseluruhan.

Masalah lain yang sering ditemui adalah hilangnya rekaman CCTV pada saat dibutuhkan, terutama saat sedang melakukan investigasi terkait kejadian tertentu. Kehilangan rekaman ini dapat menghambat proses penyelidikan dan bahkan mempersulit klaim asuransi.



Karena sistem keamanan tidak terhubung dengan baik, petugas keamanan harus bekerja lebih keras dan lebih lama untuk memantau semuanya.



Karena informasi penting terkait keamanan tersebar di banyak monitor terpisah, petugas keamanan kesulitan untuk melihat semuanya dengan jelas dan efisien.

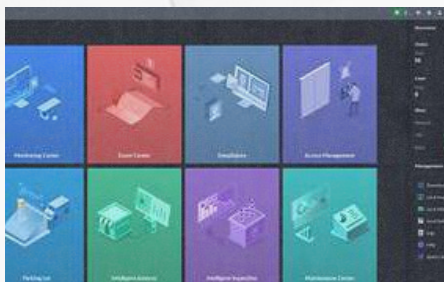


Jika rekaman hilang saat sedang menyelidiki kejadian tertentu, maka proses klaim asuransi bisa menjadi lebih rumit.



VALUE

Control Center Solution ini menawarkan platform terintegrasi yang mampu mengelola berbagai subsistem keamanan. Fitur ini memungkinkan operator/petugas memantau secara menyeluruh, menangani insiden dengan efisien, mengontrol situasi dalam jarak yang jauh, dan menavigasi peta digital. Dengan teknologi decoder dan operasi antar layar, pengalaman operator menjadi lebih nyaman dan beban kerja di ruang control center pun berkurang. Selain itu, penyimpanan redundan NVR dan EVS secara efektif mengatasi masalah kehilangan rekaman, memastikan kelancaran investigasi kejadian dan mencegah kegagalan klaim asuransi.



Integrated Operation Platform

DSS berfungsi sebagai platform operasi terintegrasi untuk mengelola semua subsistem, meningkatkan efisiensi kerja personel keamanan.

Multi Display Cross-screen Operation

Sistem tampilan terintegrasi meningkatkan visibilitas, efisiensi, dan pengambilan keputusan dengan mengkonsolidasikan berbagai sumber informasi dalam pengaturan konten yang fleksibel.



Dual Storage Protection

Dual storage dengan NVR dan EVS akan melindungi data, meningkatkan keamanan, dan mencegah kehilangan bukti untuk investigasi kejadian.

NVD0405DU-2I-8K

Ultra-HD Network Video Decoder

- > 2ch@8K/10ch@4K/36ch@1080P/144ch@D1 real-time decoding ability
- > HDMI input max support 1 channel 4K@60fps collection
- > 4ch HDMI output max support 4K@60fps output
- > Up to 8K image splicing display
- > Supports up to 4 video-wall display units or monitors
- > Splicing screens control for zoom/merge/roam/overlay
- > Supports 1/4/6/8/9/16/25/36 and free split
- > Fisheye de-warp function, supports multi-video split display in ceiling mount, wall mount, ground mount installation mode
- > Supports alarm, RS232, RS485



S5500-24GF4XF-E

28-Port Managed Gigabit Switch with 24-Port GSFP and 4-Port 10G SFP+

- > Rich layer 3 features.
- > Reliable hardware design with modular dual power supply.
- > Excellent manageability.
- > High availability.
- > High-density 10 Gigabit port.



EVS5016S-R-V2

16-bay Embedded Video Storage

- > 64-bit high-performance multi-core processor.
- > Max 320-ch IP camera inputs.
- > Max 800 Mbps incoming/recording/forwarding bandwidth.
- > 16 bays, SATA, Hot-Swap.
- > Supports RAID 0/1/5/6/10/50/60, Hot spare.
- > Supports video stream direct storage mode and IPSAN storage mode.
- > Supports N+M cluster.
- > Supports Automatic Network Replenishment (ANR).
- > Modular and drawer-like design.
- > 1+1 redundant 80PLUS platinum power supply.



CS4010-8ET-110

10-Port Cloud Managed Desktop Switch with 8-Port PoE

- > Meets the requirements of IEEE802.3, IEEE802.3u, IEEE802.3x, IEEE802.3ab standards
- > Meets the requirements of IEEE802.3af, IEEE802.3at, Hi-PoE, and IEEE802.3bt power supply standards.
- > Manages PoE power consumption and PoE power on/off. Supports Intelligent PoE.
- > A wide operating temperature range and a full metal casing that is fully-enclosed and dust-proof.



NKB1000-E

Network Keyboard

Keyboard to Control

- > Dahua High Speed Dome
- > Dahua Standalone DVR
- > Network Video Server

Connection

- > RS485, RS422 (reserved), USB, RS232 & Network

Functions

- > Three-Dimensional Joystick Control of PTZ Functions
- > Preset Position, Auto Scan, Auto Pan, Auto Tour & Pattern Auxiliary Functions

Auxiliary Functions

- > On-Screen Menu & User Operation Procedure Tips
- > Connect to SmartPSS or DSS platform via USB



NVR5864-EI

Dahua 64CH 8HDD 2U NETWORK VIDEO RECORDER

- > Supports Smart H.265+, H.265, Smart H.264+, H.264 and MJPEG decoding formats.
- > Max. decoding capability: 32 × 1080p@30 fps or 32 × 2MP@30 fps.
- > Max. 384/384/384 Mbps incoming/recording/outgoing bandwidth.
- > Supports IP cameras with a resolution up to 32 MP.
- > Supports AcuPick with up to 32 channels.
- > Supports N+M cluster, iSCSI.
- > Support Raid0/1/5/6/10.
- > AI by Recorder supports 2-channel face detection and recognition, up to 20 face databases and 20,000 face images; 4-channel perimeter protection; 8-channel SMD Plus.
- > AI by Camera supports face detection and recognition, perimeter protection, SMD Plus, metadata, ANPR, stereo analysis, heat map, and people counting.
- > Supports EPTZ, and one-click arming and disarming.



LS460UDM-UF

46" FHD Video Wall Display Unit (Ultra Narrow Bezel 1.7mm)

- > Industrial level ADS LCD panel, suitable for continuous 24/7 operation
- > Ultra-narrow 1.7mm B-to-B (Panel Bezel to Panel Bezel) design
- > Anti-glare panel, vivid and memorable image quality
- > Factory calibration technology for color uniformity
- > Built-in 3D noise reduction system and picture splicing function
- > Abundant interfaces HDMI, DVI, VGA, DP (UHD daisy chain), RS232, Audio
- > Up to 4K@60Hz signal input by DP IN or HDMI 1 interface, up to 4K@30Hz signal output by DP OUT interface
- > Infrared, RS232 dual mode, supporting remote control by computer
- > Professional thermal design to extend device lifespan
- > Built-in power, low energy consumption, ultra-quiet
- > Modular structure design, multiple installation modes
- > Widely used in surveillance center, command center, meeting room, commercial display scenes, etc.



Integrated Solar-powered Security



CHALLENGE

Di berbagai sektor, tantangan keamanan semakin kompleks dan terus berkembang seiring dengan meningkatnya kebutuhan akan perlindungan aset, infrastruktur, dan lingkungan. Lokasi terpencil, keterbatasan akses listrik, biaya operasional tinggi, serta ancaman pencurian dan vandalisme menjadi masalah utama yang memerlukan solusi inovatif. Selain itu, banyak organisasi menghadapi kesulitan dalam mengelola pengawasan secara real-time, terutama di area yang luas atau sulit dijangkau.



Lokasi terpencil

Sulitnya menyediakan pengawasan keamanan di area yang jauh dari akses listrik atau infrastruktur pendukung.



Ketergantungan pada listrik konvensional

Sistem keamanan tradisional rentan terhadap pemadaman listrik, yang dapat menyebabkan gangguan operasional.



Biaya operasional tinggi

Penggunaan energi konvensional dan kebutuhan perawatan rutin meningkatkan pengeluaran jangka panjang.

Integrated Solar-powered Security

VALUE

Solusi keamanan all-in-one dengan tenaga surya dan kamera AI 4G meningkatkan keamanan dan efisiensi biaya bagi pemilik properti. Selain itu respon terhadap penyusupan akan menjadi tepat waktu. Bukti video mudah di dapatkan untuk mencegah potensi kerugian.



24/7 Comprehensive Coverage

Merekam video secara terus-menerus dan memberikan cakupan yang detail. Sistem ini juga menawarkan akurasi 99% dalam mendeteksi penyusup dan meminimalkan kerugian properti.



Low-cost Deployment

Desain all-in-one memungkinkan pemasangan memakan biaya yang rendah dan pemasangan hanya membutuhkan waktu 20 menit. Hal tersebut secara signifikan mengurangi biaya dibandingkan dengan konstruksi kabel daya dan jaringan tradisional.



Real-Time Intrusion Alert

Deteksi berbasis AI dan peringatan secara pop-up dikirim langsung ke perangkat pemilik sehingga membantu meminimalisir kerugian dan kerusakan.

4IPC-HFW3441DG-AS-4G-LA-B

4MP IR Fixed-focal Bullet WizSense 4G Network Camera

- > 4-MP 1/3" CMOS image sensor, low luminance, and high-definition image.
- > Outputs max. 4 MP (2688 × 1520) @25/30 fps.
- > H.265 codec, high compression rate, ultra-low bit rate.
- > Built-in warm light/IR LED.
- > Sound and light alarm linkage. When the alarm is triggered, the sound and light will be linked.
- > Built in high-performance 4G Module that suits all mobile networks. Installation is no longer limited to wired networks. Please test the local 4G network with the camera before use.
- > Built-in PIR sensor that detects human body through passive infrared which is sensitive to body temperature.
- > Built-in 8 GB eMMC memory chip that protects key records from being lost.
- > Intelligent detection: Intrusion, tripwire (support the classification and accurate detection of vehicle and human).
- > Abnormality detection: Motion detection, video tampering, audio detection, SD card full, SD card error, network disconnection, IP conflict and illegal access.
- > Alarm: 1 in, 1 out; audio: 1 in, 1 out; RS485:1 (Only report the information of solar battery, such as power and battery level), Supports max. 256 G Micro SD card; built in MIC and speaker; support two-way talk.
- > IP67 protection.
- > SMD 3.0



PFM378-B125-CB

Integrated Solar Monitoring System (Without Lithium Battery)

- > Solar Power System.
- > Integrated design, easy to install.
- > Pole mount.
- > Angle flexible adjustment of solar panel and camera mount.
- > 125 W Monocrystalline solar panel.
- > Aluminum alloy frame.
- > Built sturdy to resist storms with sustained winds up to 117 km/h. (Note: The following four functions are only supported when battery power is used.)
- > Remote monitoring available through the mobile app.
- > Maximum Power Point Tracking (MPPT) charging controller.
- > RS-485 communication.
- > Electric protection.
- > With ceiling mount bracket of PTZ camera PFB301C & mount adapter PFA111.



SD6C3432GB-HNR-AGQ-PV1-LA

4MP 32x Starlight TiOC WizSense Network PTZ Camera

- > 1/2.8" 4Megapixel STARVIS™ CMOS.
- > 32x optical zoom.
- > Starlight technology.
- > Max. 25/30fps@4MP.
- > IR distance up to 150 m.
- > Auto-tracking 3.0.
- > Perimeter protection.
- > Face detection.
- > 4G
- > SMD 4.0.
- > Smart Dual Light.
- > IP66.



PFM378-B100-WB

Integrated Solar Power System (without Lithium Battery)

- > Integrated design, easy to install.
- > Pole mount.
- > Flexible angle adjustment of the solar panel and the camera.
- > 100W Monocrystalline solar panel.
- > Built sturdy to resist storms with sustained winds up to 117 km/h.
- > Remote monitoring available through the mobile app.
- > Maximum Power Point Tracking (MPPT) charging controller.
- > RS-485 communication function.
- > Electric protection.



LOSS PREVENTION

CHALLENGE

Loss Prevention menjadi kebutuhan mendesak di berbagai aspek kehidupan, mulai dari perlindungan aset pribadi hingga keamanan fasilitas publik. Tantangan ini mencakup upaya untuk menghindari pencurian, kerusakan barang, dan kehilangan data penting. Tanpa langkah pencegahan yang tepat, risiko kehilangan tidak hanya berdampak secara finansial, tetapi juga dapat mengganggu kenyamanan, keamanan, dan stabilitas di lingkungan sekitar. Pencegahan kerugian yang efektif sangat diperlukan untuk mengidentifikasi potensi ancaman lebih awal dan melindungi berbagai aset berharga dari risiko yang tidak diinginkan.

VALUE

Loss prevention solution akan memberikan deteksi dan peringatan pencurian yang akurat sehingga respon petugas keamanan menjadi lebih cepat. Sistem ini terintegrasi dengan CCTV berbasis AI dan akan meningkatkan efisiensi dalam mengumpulkan bukti pencurian.

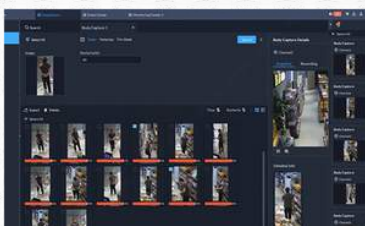
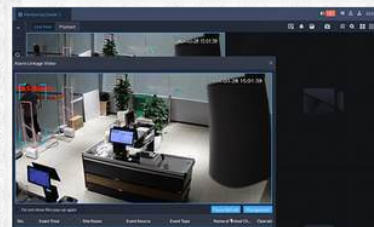


Accurate Stealing Detection

Akurasi pendeteksi pencurian yang tepat terhadap barang-barang yang dicuri secara signifikan akan mengurangi false alarm dan insiden yang terlewatkan.

Prompt Notifications and Alerts

Notifikasi dan peringatan tepat waktu memungkinkan respons cepat, meningkatkan keamanan, mengurangi kerugian, meningkatkan kesadaran staf, dan membantu pengumpulan bukti yang akurat.



Efficient Video Evidence Retrieval

Bukti video yang efisien dapat di unduh, sehingga meningkatkan kecepatan respons, menyederhanakan penyelidikan, dan mengoptimalkan penggunaan bukti pencurian.

ISC-ETA1-R111

AM Label

- > Easy to use, suitable for most commodities.
- > Small in size, able to provide concealed protection.
- > Adopts self-adhesive process, which has good adhesion and less residual adhesive.



ISC-ED-0919



Star Super Detacher D919

- > Adapt to most magnetic unlock EAS Tags.
- > Strong and durable shell material protects the core magnetic material in all directions.
- > Equipped with a circular cover, can prevent accidental inhalation of foreign matter effectively.
- > Minimalist design and embedded installation make the counter neat and beautiful.

ISC-ETA5-T010C

AM Pencil Tag T010C

- > Environmentally friendly and economical, can be reused after unlocking.
- > Small and light design, high detection performance.
- > High detection rate, excellent anti-theft effect.
- > Lower labor operating costs, widely applicable in merchandising shops.
- > Powerful locking mechanism, effectively preventing man-made damage.



CS4010-8ET-110



10-Port Cloud Managed Desktop Switch with 8-Port PoE

- > Meets the requirements of IEEE802.3, IEEE802.3u, IEEE802.3x, IEEE802.3ab standards
 - > Meets the requirements of IEEE802.3af, IEEE802.3at, Hi-PoE, and IEEE802.3bt power supply standards.
- > Manages PoE power consumption and PoE power on/off. Supports Intelligent PoE.
- > A wide operating temperature range and a full metal casing that is fully-enclosed and dust-proof.

LM22-B200S

21.45" FHD Monitor

- > Light and cost-effective plastic housing;
- > Ultra-narrow bezel, elegant appearance, metal base;
- > 178°H/178°V extra-wide viewing angle for overall viewing performance;
- > High fidelity digital processing for a brilliant and vivid video;
- > Support multiple signal inputs such as HDMI, VGA;
- > Physical button control mode;
- > Low energy consumption, long service life;
- > Anti-blue light design, eye-protective.



SIPC-HDW3449H-AS-PV

4MP Smart Dual Illumination Active Deterrence Fixed-focal Eyeball WizSense Network Camera

- * The parameters and datasheets below can only be applied to 3449-PV-S5 series.
- > 4-MP 1/2.7" CMOS image sensor, low luminance, and high-definition image.
- > Outputs max. 4 MP (2688 × 1520) @25/30 fps.
- > H.265 codec, high compression rate, ultra-low bit rate.
- > Built-in warm light and IR LED; the max. IR illumination distance is 30 m and warm light distance is 30 m.
- > ROI, SMART H.264+/H.265+, AI H.264/H.265, flexible coding, applicable to various bandwidth and storage environments.
- > Rotation mode, WDR, 3D NR, HLC, BLC, digital watermarking, applicable to various monitoring scenes.
- > Intelligent monitoring: Intrusion, tripwire (the two functions support the classification and accurate detection of vehicle and human).
- > Abnormality detection: Motion detection, privacy masking, scene changing, audio detection, no SD card, SD card full, SD card error, network disconnection, IP conflict, illegal access, and voltage detection.
- > Alarm: 1 in, 1 out; audio: 1 in, 1 out; supports max. 256 G Micro SD card; built-in dual Mic; 1-ch speaker; support two-way talk.
- > 12 VDC/PoE power supply.
- > IP67 protection.
- > Sound and light alarm (red and blue lights).
- > SMD 4.0.
- > Supports AI SSA and one-tap arming and disarming.
- > SMD area can be set in warm light areas that support triggering alarms.



ISC-EAA8-C208-P



Network Ultra Acrylic AM Antenna

- > Minimalist frameless design, high transparent acrylic shell, which is beautiful, stylish, durable, solid and easy to install.
- > Superior detection distance, max detection distance can be 2.4 meters (pencil tag DHI-ISC-ETA5-T901).
- > Excellent anti-interference, continuous working in complex electromagnetic environment.
- > Built-in 1.3-inch OLED display and WEB interface, convenient configuration.
- > Auto/manual adjust phase to effectively handle different kinds of interference.
- > Alarm volume and alarm tone are both adjustable.
- > Integrated 5 colors background LED light.
- > Supports tag too close alert.
- > The primary and replica antenna are all integrated transceivers, three modes can be selected: RX, TX, TR mode.
- > The primary antenna can connect up to 2 replica antennas as 1 set system. Multi-system can work together.
- > Economic operating power consumption, energy-saving and environment-friendly.
- > CCTV monitoring linkage.
- > Supports firmware upgrade.
- > Supports network platforms connection, such as DSS Pro platforms.
- > Support cloud services, remote configuration.
- > Supports multi-language (Optional).

MARKET APPLICATION

Government

ISMS dalam sektor pemerintah digunakan untuk melindungi data sensitif dan memastikan keamanan fisik fasilitas penting.

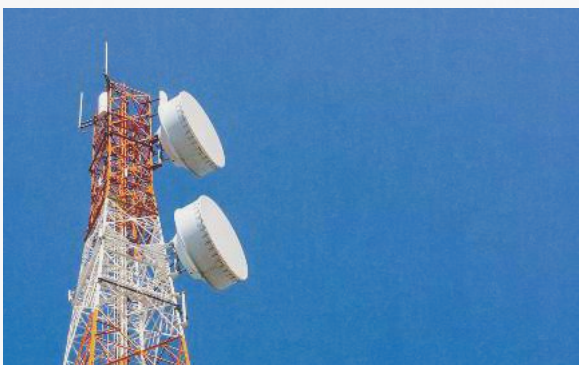


Keamanan di Gedung Pemerintah

Memanfaatkan access control berbasis biometrik, face-recognition, dan integrasi alarm kebakaran untuk memastikan keamanan fisik gedung dan keselamatan orang-orang di dalamnya.

Telecommunication

Dalam industri telekomunikasi, ISMS digunakan untuk melindungi jaringan komunikasi dan fasilitas teknis.



Pengamanan Menara Telekomunikasi

Sistem monitoring jarak jauh menggunakan CCTV, sensor gerak, dan alarm intrusi untuk melindungi infrastruktur seperti BTS (Base Transceiver Station).

Proteksi Akses Karyawan

Menggunakan kontrol akses berbasis kartu atau biometrik untuk membatasi akses ke ruang server yang sensitif.

Residential

ISMS di lingkungan residensial digunakan untuk melindungi penghuni, properti, dan lingkungan sekitar.



Sistem Keamanan Smart Home

Mengintegrasikan kamera CCTV, sensor gerak, alarm pintu, dan perangkat IoT (Internet of Things) untuk memantau dan mengontrol keamanan rumah dari jarak jauh melalui aplikasi.

Kontrol Akses Perumahan

Sistem gerbang otomatis dengan pengenalan plat nomor kendaraan (ANPR) atau kartu akses untuk penghuni dan tamu.

Manajemen Lingkungan Perumahan

Mengintegrasikan alarm kebakaran, deteksi gas, dan jalur evakuasi otomatis untuk keselamatan penghuni di apartemen.

Commercial

Dalam sektor komersial, ISMS digunakan untuk melindungi aset, karyawan, dan pelanggan



Keamanan Mall dan Perkantoran

Menggunakan sistem pemantauan CCTV, kontrol akses berbasis biometrik untuk area tertentu, dan sistem evakuasi otomatis untuk situasi darurat.

Keamanan Gudang dan Logistik

Mengintegrasikan sistem RFID untuk pelacakan inventaris, kamera termal untuk deteksi aktivitas mencurigakan, dan alarm kebakaran otomatis.



CONTACT US

PT BATUKARANG KENAN ABADI

Office : Jalan Lintas Timur Km.40, Kab. Siak, Pekanbaru

Website : www.bkka.co.id

Email : batukarangkenanabadi@bkka.co.id

Contact person:

+ 62 811 1798 995 (Grace)

+62 811 1546 034 (Hansel)



